



GUT HEALTH IN POULTRY

AVIAGEN MANAGEMENT ESSENTIALS



SUMMARY

Dr. Richard A. Bailey, Poultry Health Scientist

A healthy gut is essential for the efficient conversion of feed into its basic components for optimal nutrient absorption. If gut health is compromised, digestion and nutrient absorption will be affected, and bird health, performance and welfare compromised.

GUT INHABITANTS

The gastrointestinal tract (GIT) consists of a diverse community of mainly bacteria, fungi, protozoa, and viruses (gut microbiota). The development of this community begins at hatching; bacteria are picked up from the environment, the feed and the people handling the chicks post-hatch. Each of these three areas can therefore affect gut microbiota development.

MAINTAINING THE BALANCE OF GUT HEALTH

Maintaining good gut health is critical for maintaining the growth, health and welfare of the bird. If digestion and nutrient absorption is compromised an imbalance or overgrowth of the gut microbiota can occur which in turn will affect bird health and performance. The balance of the microbiota in the gut can be significantly affected by bird management and environment.

- Diet – feed changes, raw materials and physical quality all influence the balance of the gut microbiota.
- Appropriate brooding conditions – the provision of optimal brooding conditions is essential for ensuring optimal gut microbiota development. Birds receiving appropriate brooding develop a gut that performs well and has a greater capacity to cope with the challenges of the broiler shed. Early access to feed and water is important.
- Biosecurity – if clean-out and disinfection procedures are inappropriate, pathogens will be introduced into the poultry shed, exposure to these pathogens will influence gut health and development.
- Risk periods - there are times during poultry production when the bird will be challenged, for example during feed change-overs or vaccination. During these periods, the gut microbiota can fluctuate and in some cases, if management is sub-optimal, dysbacteriosis can occur.
- Environmental conditions - temperature and ventilation. Achieving optimal environmental conditions will promote good gut health.
- Mycotoxins and infections will also impact gut health.

CONCLUSION

Maintaining the balance of good gut health is a key aspect of ensuring the best bird performance and health. Management styles, climate, disease and feed raw materials all affect gut health. Good bird management practices (brooding, feed, water, biosecurity and environment) are necessary to maintain gut, and therefore bird, health, welfare and performance.

INTRODUCTION

The efficient conversion of feed into its basic components for optimal nutrient absorption is vital for both broiler and broiler breeder production and welfare. Gut health, an intricate and complex area combining nutrition, microbiology, immunology and physiology, has a key role to play. When gut health is compromised, digestion and nutrient absorption are affected which, in turn, can have a detrimental effect on feed conversion leading to economic loss and a greater susceptibility to disease.

AN OVERVIEW OF THE GUT AND HOW IT WORKS

The intestinal tract of a bird is a specialized tube that starts at the beak and ends in the cloaca. The primary function of the gut is the conversion and digestion of food into its basic components for absorption and utilization by the bird. The gut is separated into five distinct regions (**Figure 1**); the crop, proventriculus, gizzard, small intestine (duodenum, jejunum and ileum) and large intestine (ceca, colon and rectum). Each of these regions has a specific role in the digestion process and absorption of nutrients.

KEY MANAGEMENT POINTS

- The gut is responsible for the digestion and absorption of nutrients.
- If gut function is impaired, digestion and absorption of feed will be reduced and bird performance and welfare will be compromised.

Figure 1:
The gastrointestinal tract of a chicken.

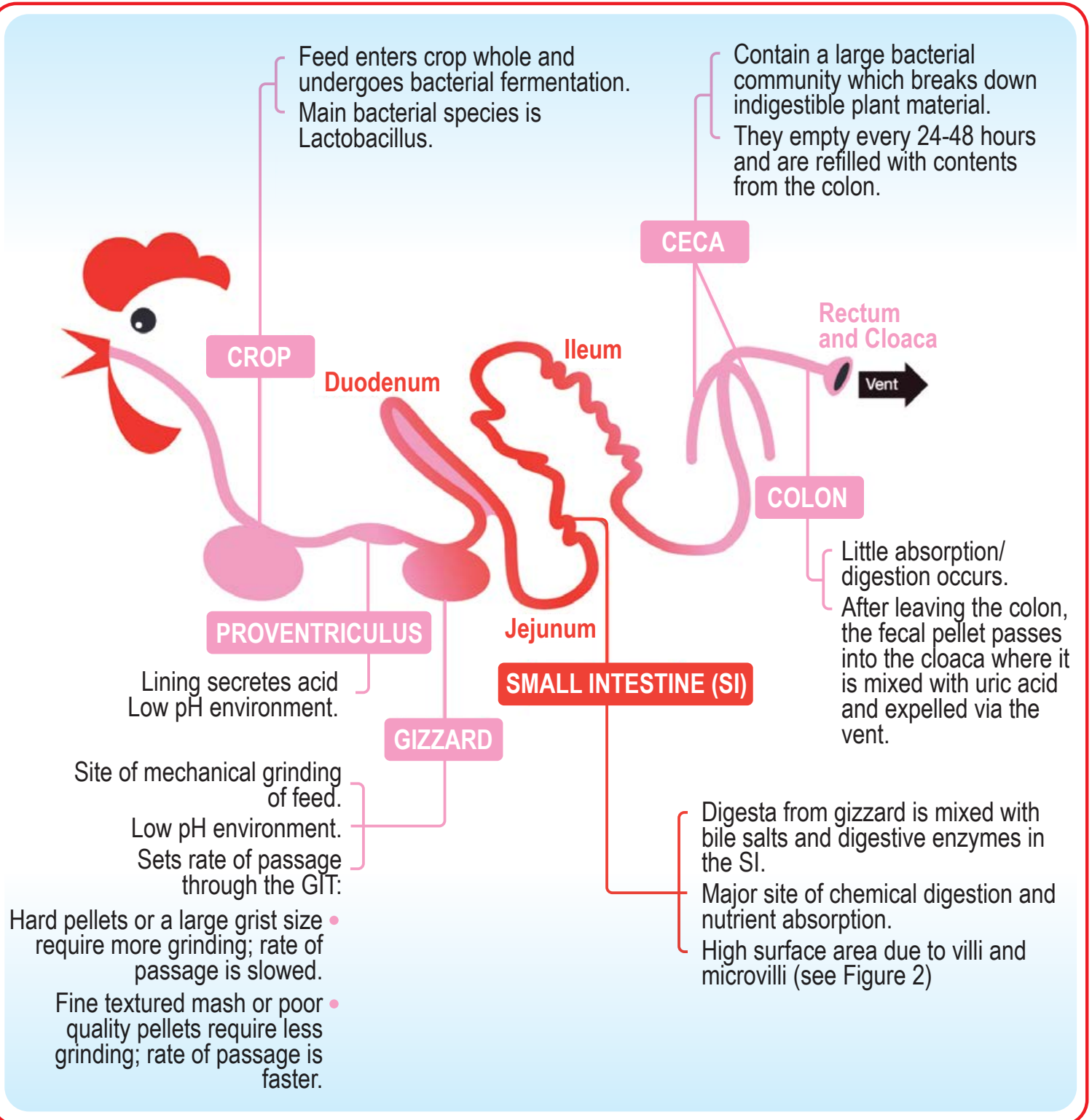
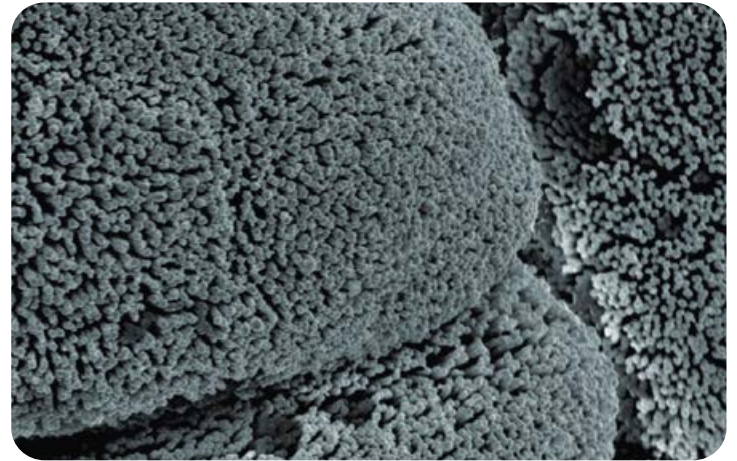
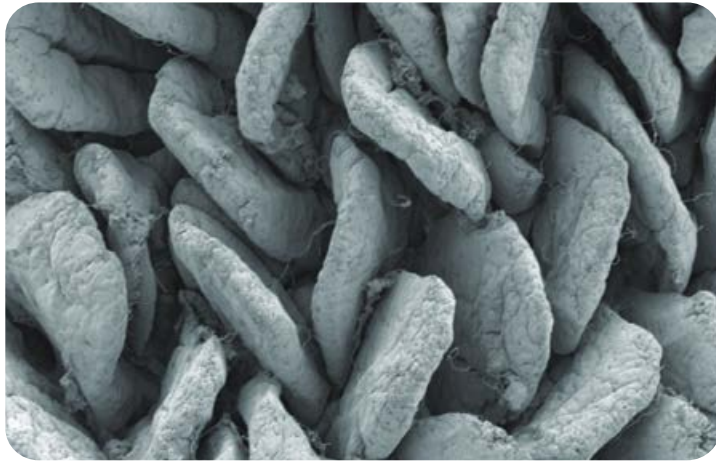


Figure 2:

Electron micrograph of villi (left) and microvilli (right) of the small intestine.



The feed enters the crop where it is stored for a short period of time and partially fermented by the resident bacteria. The feed then enters the proventriculus where it is mixed with acid and pepsin (an enzyme which breaks down protein) and then on to the gizzard. The gizzard acts like a grinding mill to break the feed into smaller particles, it will then release the feed into the small intestine once the feed particles are small enough. While the gizzard grinds the feed, it is mixed with the acid and enzymes secreted by the proventriculus. This process allows for the break down of whole proteins into smaller peptides which can then be digested in the small intestine into amino acids for absorption. Within the small intestine, the carbohydrates and fats are also broken down so that they can be absorbed and used by the birds. During the normal digestion process, by the time the digesta reaches the last part of the ileum all the proteins, fats and carbohydrates should have been absorbed leaving behind the non-digestible components of the feed (e.g., cellulose, non-starch polysaccharides, etc.). This material has two fates; it is either passed out in feces or taken up by the ceca where bacteria ferment these materials to form organic acids, short chain fatty acids and vitamins which the bird can absorb for extra nutrients. At the end of digestion, chickens produce two types of droppings, a cecal and a fecal which look very different (**Figure 3**).

Figure 3:

The fecal dropping (left) should form a semi solid bolus comprising of waste material with a white uric acid cap – this should be checked for abnormalities such as excessive water, fat, mucus and feed particles. The cecal dropping (right) should be dark in color, have a paste like consistency and be free of gas bubbles.



GUT INHABITANTS – A WORLD TO DISCOVER

The community of microorganisms in the gut is referred to in many ways: friendly bacteria, gut flora, gut microbiota and gut microbiome. It is a diverse community of mainly bacteria, fungi, protozoa and viruses. While modern DNA- based technologies have given a much more accurate picture of the bacterial species present in the gut, it has become increasingly evident that a large number of bacteria in the gut are currently unknown and unclassified.

Recent studies focusing on poultry have proposed that the gastrointestinal (GI) tract of a broiler chicken is colonized by an estimated 600-800 species of bacteria. The abundance and diversity of the microbiota varies along the GI tract and, predictably, the regions that have less tolerable conditions and faster passage of gut contents have lower numbers of bacteria. Even though bacteria can be found in the gut of the developing embryo, it is generally considered that the development of the adult gut microbiota predominately begins at hatching where bacteria are picked up from the environment, the feed and the people handling the chicks post-hatch. The crop is rapidly colonized within 24 hours. After one day post-hatch, the ileum and ceca are also both dominated by bacteria.

After three days, the level of bacteria in the small and large intestine increases ten-fold. The first bacteria to enter the gastrointestinal tract can be considered the pioneering bacteria as they rapidly multiply and colonize the gut environment. The composition of the pioneering bacterial community goes through a succession of changes as the gut develops and oxygen levels fall. It can take up to 3-4 weeks for the microbiota to form the climax (or adult) microbiota, but during this period, stability is seen in the gut if chicks are provided with optimal brooding conditions along with good feed and water quality.

KEY MANAGEMENT POINTS

- The gut consists of a diverse range of bacteria, fungi, protozoa and viruses.
- Development of the gut microbiota begins on hatching; bacteria are picked up from the environment, the feed and people. Each of these three areas can affect gut microbiota development.

THE BALANCE OF GUT HEALTH

Gut health relies on the maintenance of the delicate balance between the host, the intestinal microbiota, the intestinal environment and dietary compounds. This balance can be significantly affected by factors such as bird management, feed quality and the birds' environment. When gut health is optimal, there is complete digestion of the feed and absorption of the nutrient components. If there is a disruption to the normal processes in the gut, incomplete digestion and absorption of nutrients can occur, leading to malabsorption and gut imbalance. If there is any imbalance in the gut environment, gut health is then at risk of being compromised which can impact the health and performance of the birds. When digestion and absorption is not optimal, there is malabsorption of nutrients resulting in more nutrients being available to the small intestinal bacteria that can lead to an overgrowth of the bacterial population. A further

consequence of malabsorption is the passing of proteins, sugars and fat into the ceca causing an overgrowth in the microbial population and a shift away from the beneficial fermentative bacteria. The balance of the microbiota in the gut can be affected by factors such as:

- poor gut development
- feed change
- feed (quality and raw materials)
- mycotoxins
- biosecurity
- environment (temperature and ventilation)
- brooding conditions
- infections with viruses, bacteria or coccidiosis
- water quality

Changes in raw material type, nutrient density and feed form have all been shown to impact the microbiota. During the life of a flock there are a number of feed changes where there is a shift in composition of the diets; this invokes a change in the micronutrients available for the gut microbiota. The consequence of this change can be a minor bacterial imbalance in the gut as the microbiota adjusts to the new feed. This imbalance is usually of no consequence unless there are other factors impacting gut health at the time of the feed change.

Feed form is very important for gizzard function. Excess fines or poor pellet quality can result in the gizzard passing feed into the small intestine too quickly. If this occurs, there is not enough time for the acid and pepsin enzyme to break down protein resulting in whole proteins entering the small intestine which is detrimental as the small intestine cannot properly digest whole protein. When this happens there is protein malabsorption and increased viscosity in the gut, both of which increase the risk of dysbacteriosis and in severe cases may lead to necrotic enteritis. The use of cracked corn, whole wheat or insoluble fiber can help with gizzard stimulation to ensure optimal mixing of the feed within the gizzard.

Changes in the bacterial populations of the small intestine and ceca that occur during an imbalance is commonly referred to as dysbacteriosis and, if prolonged, can have negative effects on the host (see box below). The shift in cecal bacterial activity results in the production of different bacterial metabolites (the compounds produced by bacteria when they break down nutrients). Some of these metabolites, such as amines produced from bacteria metabolism of amino acids, can cause gut irritation making the ongoing gut upset worse.

The presence of certain bacteria is increased during dysbacteriosis and the action of these bacteria further affects nutrient absorption. For example, some bacteria can reduce fat absorption by inactivating the bile acids which bind to dietary fats for absorption. Other bacteria can destroy the surface of the villi reducing the surface area available for nutrient absorption. When nutrient absorption is reduced, it is not uncommon for birds to increase their feed intake in an attempt to meet their nutritional demands. This can lead to faster gut transit time, feed passage and wetter litter due to increased water intake.

WHAT IS DYSBACTERIOSIS?

Dysbacteriosis is not a specific disease but a secondary syndrome. It is an imbalance in the gut microbiota as a consequence of an intestinal disruption. It results in poor nutrient absorption in the gut leading to poorer FCR and reduced live weight. If dysbacteriosis is severe enough it can contribute to wet litter.

If the gut is properly developed and the immune system is not compromised the impact of a gut upset on bird growth (and FCR) can be reduced. After the birds hatch and get access to feed and water the gut is triggered into its final stages of maturation. Biosecurity, shed hygiene and brooding management are all key for chick health and the establishment of a healthy gut. During the first week of life the gut undergoes rapid maturation with rapid growth of the intestinal villi; the length of the villi after this growth phase is critical as it dictates the length of the villi in the adult bird. If villi growth is compromised during brooding the result is shorter villi in the adult bird which will impact upon performance. Optimal villi growth relies on correct brooding management along with good feed and water quality. In the field it has been observed that the chicks receiving good brooding tend to develop a gut that performs well and has a greater capacity to cope with challenges in the chicken shed.

Water quality and line management are critical for the long term health of the gut; failure to monitor and promote water quality on farm can be detrimental to gut health and bird performance. Water management strategies depend upon water source (e.g. mains water or open source water), water hardness, water pH and mineral levels in water. The box below outlines the steps for ensuring the supply of clean water to birds.

WATER QUALITY - GENERAL WATER MANAGEMENT PROTOCOL

1. Ensure adequate cleaning between flocks:

- Remove biofilm (e.g. 25-50 ppm Hydrogen peroxide in water line for 24-72 hours then flush).

2. Prior to bird arrival

- Flush just before birds arrive.

3. Through life of flock

- Sanitize (e.g., Chlorine [2-4 ppm] or Chlorine dioxide [0.8 ppm]).
- Perform waterline biofilm removal at regular intervals through life of flock (biofilms can form in 6 weeks).
- Routinely check ORP (oxygen reduction potential) at the drinker furthest from the water tank to check efficacy of sanitation; it should be >650 mv).

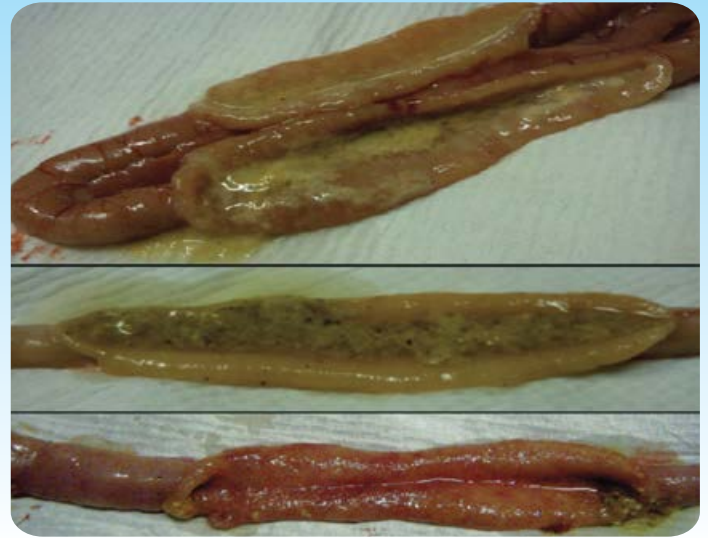
The color of the gut surface, tone of the gut wall and the consistency of the contents are basic indicators of ongoing gut health and can help with the identification of the cause of the issue.

The image on the left shows a healthy gut with the duodenum at the top then the jejunum and then the ileum. The gut surface is pink with the gut wall folding back on itself indicating good muscular tone. The transition of the content consistency and color are good indicating good digestion. The images on the right show poor gut health from different birds. Here, the surface of the gut is seen to be inflamed, the gut tone is poor, and the contents consist of mucus and excessive fluid. These are all indicators of poor gut health and impaired digestion.

GOOD DIGESTION



POOR DIGESTION



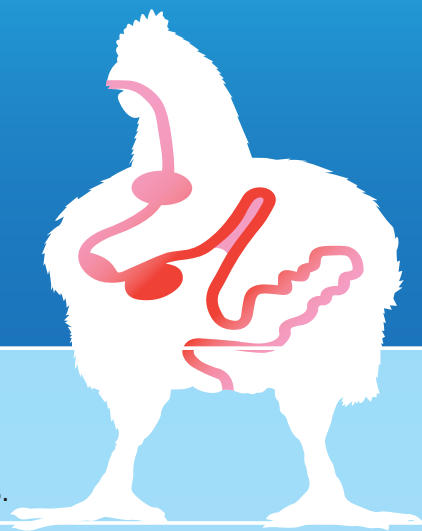
KEY MANAGEMENT POINTS

- The gut microbiota has an important role to play in maintaining the growth, health and welfare of the bird.
- An imbalance in gut microbiota will have an affect on bird performance.
- The balance of gut microbiota can be affected by:
 - Diet (feed change, raw materials, physical quality).
 - Sub-optimal management, particularly during events that put pressure on the gut such as vaccination or feed change-overs.
 - Environmental conditions.
 - Mycotoxins.
 - Infections (viruses, bacteria or coccidiosis).
- Providing appropriate brooding conditions is vital for ensuring appropriate gut development:
 - Adequate environmental temperatures and ventilation.
 - Adequate access to feed and water.

CONCLUSIONS

Maintaining the balance of good gut health is a key aspect of getting the best growth and FCR out of any food producing animal. Many researchers have attempted to understand gut flora, gut function and gut immunity. It is increasingly evident that the gut remains a highly complex area. Regional variations in poultry production, management styles, climate, disease challenge and feed raw materials add further complexity to maintaining good gut health, but what is clear is that developing and maintaining gut health through good bird management practices is key to maintaining bird health, welfare and performance.

FACTORS TO CONSIDER WHEN IT COMES TO GUT HEALTH.



TEMPERATURE

- Incorrect temperature can stress chicks.
- Feed intake can also be affected.
- This impairs gut development.
- Result is poor gut function and poor FCR as the bird ages.

VENTILATION

- Fresh air is necessary for bird health, thus proper ventilation is required.
- Failure to ventilate can result in a build-up of carbon dioxide, ammonia and moisture in a shed.
- Wet litter can occur if moisture is not removed from the shed.
- The result can be gut upset and poor footpad health.

BIOSECURITY

- Poor biosecurity is a threat to any poultry flock.
- Many gut pathogens can accidentally be introduced to a chicken shed.
- This can be reduced by:
 - Foot dips or boot changes between sheds.
 - Vermin control.
 - Keeping wild birds out of the shed & feed.
 - Good storage of feed.
- Limit/prevent exposure to microbes from previous flocks.
- Ensure proper clean-out and disinfection.
- Ensure waterlines and any supplementary drinkers are cleaned and disinfected.
- This reduces the chance of early exposure to pathogens.

EARLY GUT HEALTH / BROODING

- Key aspect is to boost gut development as much as possible.
- This is an investment in the potential for the ability of the bird to obtain optimal FCR.
- Ensure the chicks receive appropriate management during brooding.
- Sub-optimal management can impair gut development and the immune system.
- The result is an inefficient gut more susceptible to upset.
- Early feed and water access is important for gut development.
- Delayed access can impair the maturation of the gut tissues and the maturation of the gut microbiota.

PERIODS OF HIGH CHALLENGE

- There are events during poultry production where challenges are inevitable:
 - Vaccination.
 - Feed change.
 - Thinning.
- During these periods, the gut microbiota can fluctuate and, in some cases, dysbacteriosis can occur.
- This would be a key opportunity to use a product such as a probiotic to act as a gut stress buffer to maintain gut health.

FEED

- Feed changes and raw materials will affect the balance of the gut microbiota.
- Poor feed quality will translate into poor FCR as the bird will be required to eat more to meet its metabolic demands.
- Poor gizzard development and stimulation will impact gut function and health.
- A diet with more fines will pass through the gizzard quicker, this impacts protein digestion and can result in nutrient malabsorption.
- Mycotoxins can cause damage to the gut tissues leading to infection or poor efficiency.



WORLD'S NO.1 BROILER BRAND

T: +27 (0) 16 366 0249

www.rosspoultrybreeders.co.za

Block A, Techno Link Office Park,
63 Regency Drive, Route 21 Business Park, Irene.
Republic of South Africa

P.O.Box 297
Meyerton 1960
Republic of South Africa

