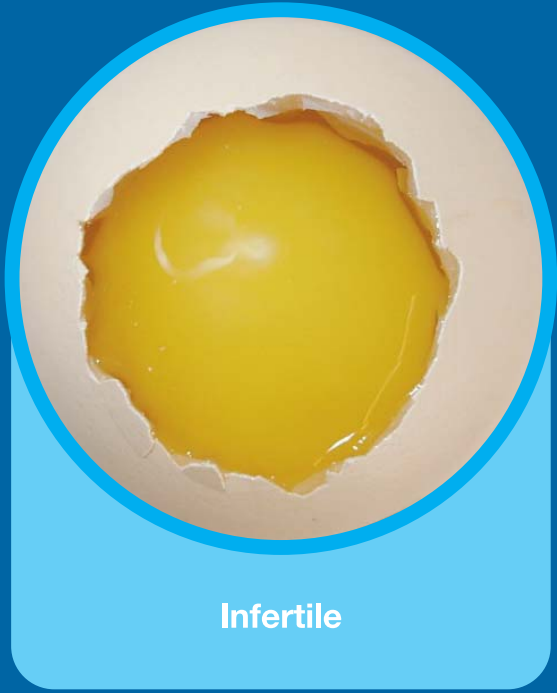




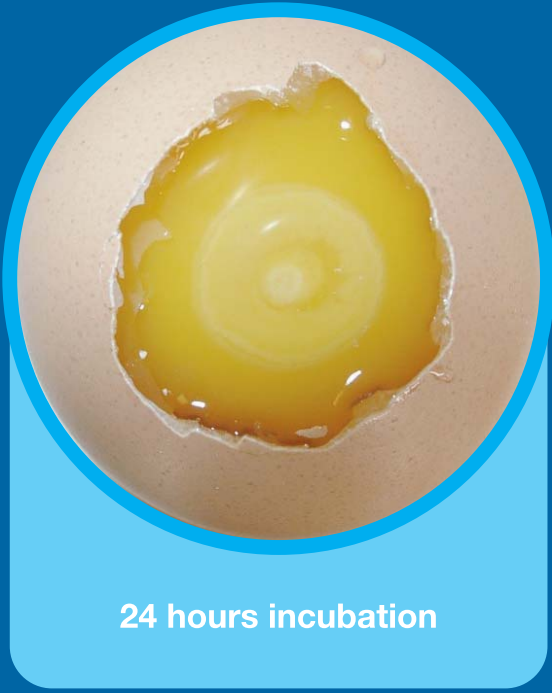
ROSS

www.aviagen.com

Stages of Embryonic Growth



Infertile



24 hours incubation



2 days incubation



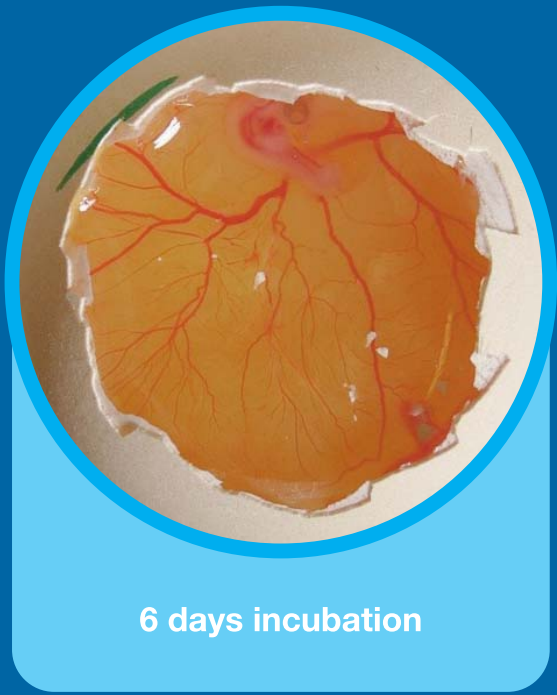
3 days incubation



4 days incubation



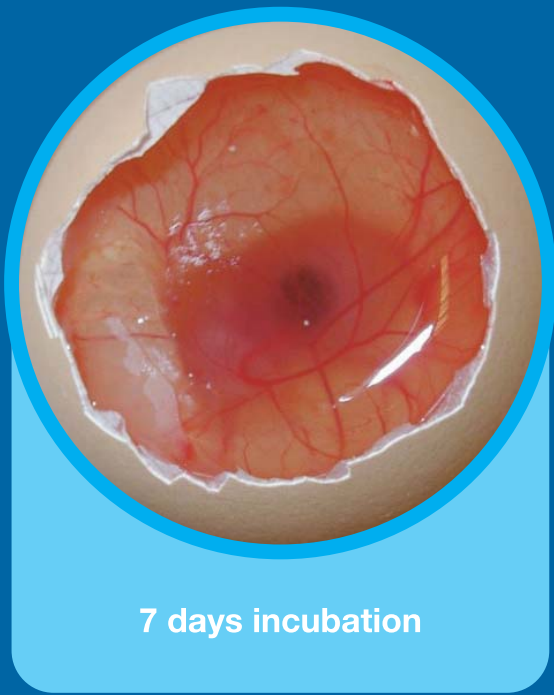
5 days incubation



6 days incubation



7 days incubation - membrane starts to thicken but remains transparent



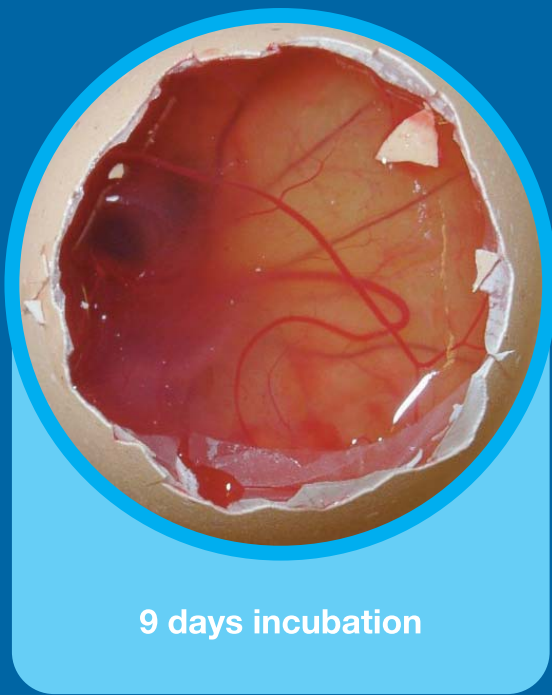
7 days incubation



8 days incubation



9 days incubation - membrane is no longer transparent



9 days incubation



10 days incubation



11 days incubation - membrane thickens



11 days incubation



12 days incubation



13 days incubation - membrane thickens further



13 days incubation



13 days incubation - feathers appearing



14 days incubation



15 days incubation



16 days incubation



17 days incubation



18 days incubation - fills shell

Appearance in Hatch Debris



24 hours development, 4 hours after the egg was opened



Blood ring after 21 days incubation



Blood ring one day after death



Mid-term death at 15 days incubation



Mid-term death after 21 days incubation